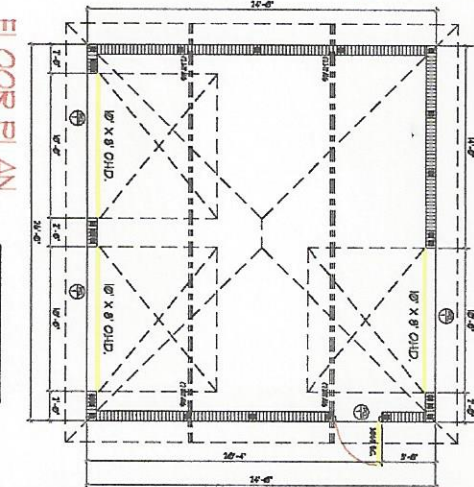
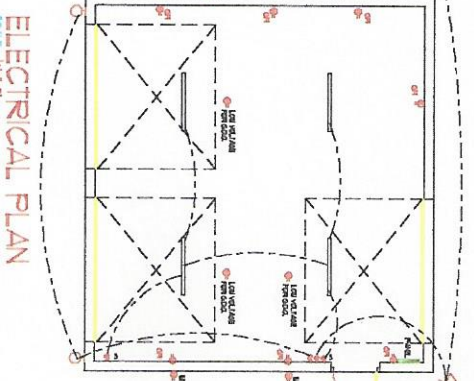
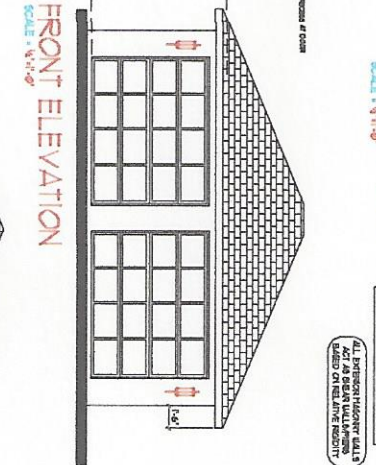
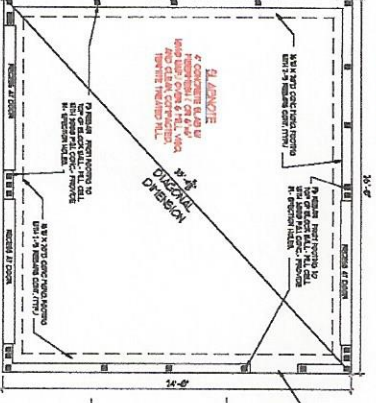
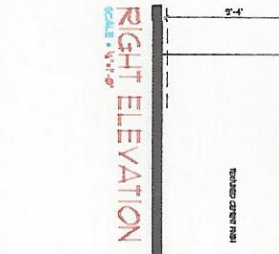
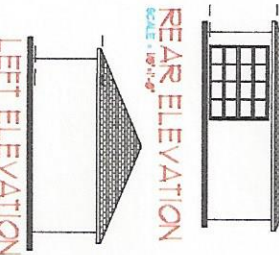
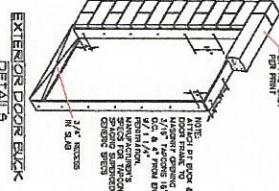
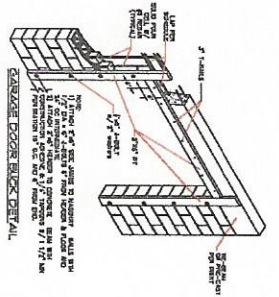
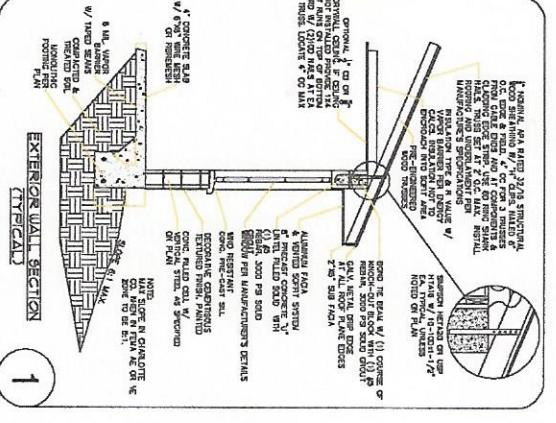


CONNECTION LABEL	FASTENER SPECIFICATION	APPLICABLE SPECIFICATIONS
1	1/2" DIA. GALV. STEEL W/ 1/2" DIA. GALV. BOLTS	1. AISC 305
2	1/2" DIA. GALV. STEEL W/ 1/2" DIA. GALV. BOLTS	1. AISC 305
3	1/2" DIA. GALV. STEEL W/ 1/2" DIA. GALV. BOLTS	1. AISC 305
4	1/2" DIA. GALV. STEEL W/ 1/2" DIA. GALV. BOLTS	1. AISC 305
5	1/2" DIA. GALV. STEEL W/ 1/2" DIA. GALV. BOLTS	1. AISC 305
6	1/2" DIA. GALV. STEEL W/ 1/2" DIA. GALV. BOLTS	1. AISC 305
7	1/2" DIA. GALV. STEEL W/ 1/2" DIA. GALV. BOLTS	1. AISC 305
8	1/2" DIA. GALV. STEEL W/ 1/2" DIA. GALV. BOLTS	1. AISC 305
9	1/2" DIA. GALV. STEEL W/ 1/2" DIA. GALV. BOLTS	1. AISC 305
10	1/2" DIA. GALV. STEEL W/ 1/2" DIA. GALV. BOLTS	1. AISC 305
11	1/2" DIA. GALV. STEEL W/ 1/2" DIA. GALV. BOLTS	1. AISC 305
12	1/2" DIA. GALV. STEEL W/ 1/2" DIA. GALV. BOLTS	1. AISC 305
13	1/2" DIA. GALV. STEEL W/ 1/2" DIA. GALV. BOLTS	1. AISC 305
14	1/2" DIA. GALV. STEEL W/ 1/2" DIA. GALV. BOLTS	1. AISC 305
15	1/2" DIA. GALV. STEEL W/ 1/2" DIA. GALV. BOLTS	1. AISC 305
16	1/2" DIA. GALV. STEEL W/ 1/2" DIA. GALV. BOLTS	1. AISC 305
17	1/2" DIA. GALV. STEEL W/ 1/2" DIA. GALV. BOLTS	1. AISC 305
18	1/2" DIA. GALV. STEEL W/ 1/2" DIA. GALV. BOLTS	1. AISC 305
19	1/2" DIA. GALV. STEEL W/ 1/2" DIA. GALV. BOLTS	1. AISC 305
20	1/2" DIA. GALV. STEEL W/ 1/2" DIA. GALV. BOLTS	1. AISC 305
21	1/2" DIA. GALV. STEEL W/ 1/2" DIA. GALV. BOLTS	1. AISC 305
22	1/2" DIA. GALV. STEEL W/ 1/2" DIA. GALV. BOLTS	1. AISC 305
23	1/2" DIA. GALV. STEEL W/ 1/2" DIA. GALV. BOLTS	1. AISC 305
24	1/2" DIA. GALV. STEEL W/ 1/2" DIA. GALV. BOLTS	1. AISC 305
25	1/2" DIA. GALV. STEEL W/ 1/2" DIA. GALV. BOLTS	1. AISC 305
26	1/2" DIA. GALV. STEEL W/ 1/2" DIA. GALV. BOLTS	1. AISC 305
27	1/2" DIA. GALV. STEEL W/ 1/2" DIA. GALV. BOLTS	1. AISC 305
28	1/2" DIA. GALV. STEEL W/ 1/2" DIA. GALV. BOLTS	1. AISC 305
29	1/2" DIA. GALV. STEEL W/ 1/2" DIA. GALV. BOLTS	1. AISC 305
30	1/2" DIA. GALV. STEEL W/ 1/2" DIA. GALV. BOLTS	1. AISC 305
31	1/2" DIA. GALV. STEEL W/ 1/2" DIA. GALV. BOLTS	1. AISC 305
32	1/2" DIA. GALV. STEEL W/ 1/2" DIA. GALV. BOLTS	1. AISC 305
33	1/2" DIA. GALV. STEEL W/ 1/2" DIA. GALV. BOLTS	1. AISC 305
34	1/2" DIA. GALV. STEEL W/ 1/2" DIA. GALV. BOLTS	1. AISC 305
35	1/2" DIA. GALV. STEEL W/ 1/2" DIA. GALV. BOLTS	1. AISC 305
36	1/2" DIA. GALV. STEEL W/ 1/2" DIA. GALV. BOLTS	1. AISC 305
37	1/2" DIA. GALV. STEEL W/ 1/2" DIA. GALV. BOLTS	1. AISC 305
38	1/2" DIA. GALV. STEEL W/ 1/2" DIA. GALV. BOLTS	1. AISC 305
39	1/2" DIA. GALV. STEEL W/ 1/2" DIA. GALV. BOLTS	1. AISC 305
40	1/2" DIA. GALV. STEEL W/ 1/2" DIA. GALV. BOLTS	1. AISC 305
41	1/2" DIA. GALV. STEEL W/ 1/2" DIA. GALV. BOLTS	1. AISC 305
42	1/2" DIA. GALV. STEEL W/ 1/2" DIA. GALV. BOLTS	1. AISC 305
43	1/2" DIA. GALV. STEEL W/ 1/2" DIA. GALV. BOLTS	1. AISC 305
44	1/2" DIA. GALV. STEEL W/ 1/2" DIA. GALV. BOLTS	1. AISC 305
45	1/2" DIA. GALV. STEEL W/ 1/2" DIA. GALV. BOLTS	1. AISC 305
46	1/2" DIA. GALV. STEEL W/ 1/2" DIA. GALV. BOLTS	1. AISC 305
47	1/2" DIA. GALV. STEEL W/ 1/2" DIA. GALV. BOLTS	1. AISC 305
48	1/2" DIA. GALV. STEEL W/ 1/2" DIA. GALV. BOLTS	1. AISC 305
49	1/2" DIA. GALV. STEEL W/ 1/2" DIA. GALV. BOLTS	1. AISC 305
50	1/2" DIA. GALV. STEEL W/ 1/2" DIA. GALV. BOLTS	1. AISC 305

NOTE: GENERAL CONTRACTOR AND OWNER TO VERIFY ALL DRAWINGS AND SPECIFICATIONS PRIOR TO CONSTRUCTION.

GENERAL NOTES:

1. ALL DIMENSIONS UNLESS OTHERWISE NOTED ARE IN FEET AND INCHES.
2. FINISH FLOOR FINISH TO BE DETERMINED BY ARCHITECT.
3. EXTERIOR WALLS TO BE CONCRETE ON GRADE.
4. FOUNDATION TO BE CONCRETE ON GRADE.
5. ROOF TO BE 1/2" GALV. STEEL ON 2" X 8" JOISTS.
6. INTERIOR WALLS TO BE 5/8" GYPSUM BOARD ON 2" X 4" STUDS.
7. INTERIOR FLOORS TO BE 1/2" GYPSUM BOARD ON 2" X 8" JOISTS.
8. CEILING TO BE 5/8" GYPSUM BOARD ON 2" X 4" STUDS.
9. DOORS TO BE 1 3/4" SOLID CORE WITH 1 3/4" GLASS INSERT.
10. WINDOWS TO BE 1/2" GLASS ON 1 3/4" FRAME.
11. ALL ELECTRICAL WORK TO BE INSTALLED IN ACCORDANCE WITH THE NATIONAL ELECTRICAL CODE (NEC).
12. ALL MECHANICAL WORK TO BE INSTALLED IN ACCORDANCE WITH THE INTERNATIONAL MECHANICAL CODE (IMC).
13. ALL PLUMBING WORK TO BE INSTALLED IN ACCORDANCE WITH THE INTERNATIONAL PLUMBING CODE (IPC).
14. ALL FINISHES TO BE IN ACCORDANCE WITH THE ARCHITECT'S SCHEDULE.
15. ALL MATERIALS TO BE APPROVED BY ARCHITECT PRIOR TO INSTALLATION.
16. ALL WORK TO BE COMPLETED WITHIN THE SPECIFIED TIME FRAME.
17. ALL UTILITIES TO BE LOCATED AND MARKED PRIOR TO CONSTRUCTION.
18. ALL EROSION CONTROL MEASURES TO BE INSTALLED AND MAINTAINED THROUGHOUT CONSTRUCTION.
19. ALL SITEWORK TO BE COMPLETED PRIOR TO THE START OF CONSTRUCTION.
20. ALL NECESSARY PERMITS TO BE OBTAINED PRIOR TO CONSTRUCTION.
21. ALL NECESSARY UTILITIES TO BE RELOCATED PRIOR TO CONSTRUCTION.
22. ALL NECESSARY EROSION CONTROL MEASURES TO BE INSTALLED AND MAINTAINED THROUGHOUT CONSTRUCTION.
23. ALL NECESSARY SITEWORK TO BE COMPLETED PRIOR TO THE START OF CONSTRUCTION.
24. ALL NECESSARY PERMITS TO BE OBTAINED PRIOR TO CONSTRUCTION.
25. ALL NECESSARY UTILITIES TO BE RELOCATED PRIOR TO CONSTRUCTION.



GENERAL CONTRACTOR AND OWNER TO VERIFY ALL DRAWINGS AND SPECIFICATIONS PRIOR TO CONSTRUCTION.

SNYDERS DRAFTING
 1578 EL JOBEAN RD.
 PORT CHARLOTTE, FL 33948
 (941) 766-7977

PROPOSED GARAGE FOR:
BERT MOREAU
 10430 REIMS AVE ENGLEWOOD

BUILDER

DATE: 5-22-16
REVISION DATE: 5-22-16
DRAWING NO.: 5-22-16
BY: [Signature]
CHECKED BY: [Signature]
SCALE: 1/8" = 1'-0"